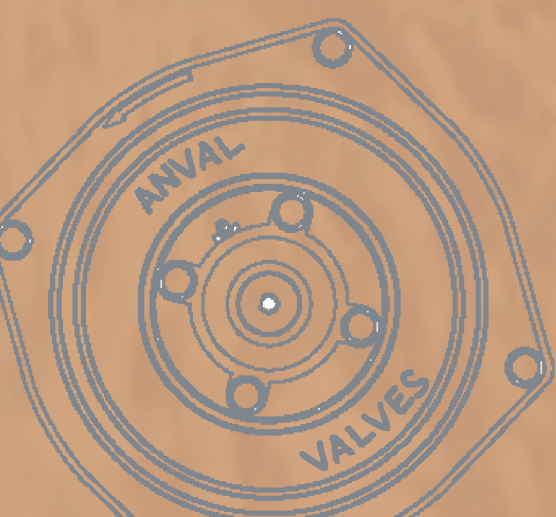
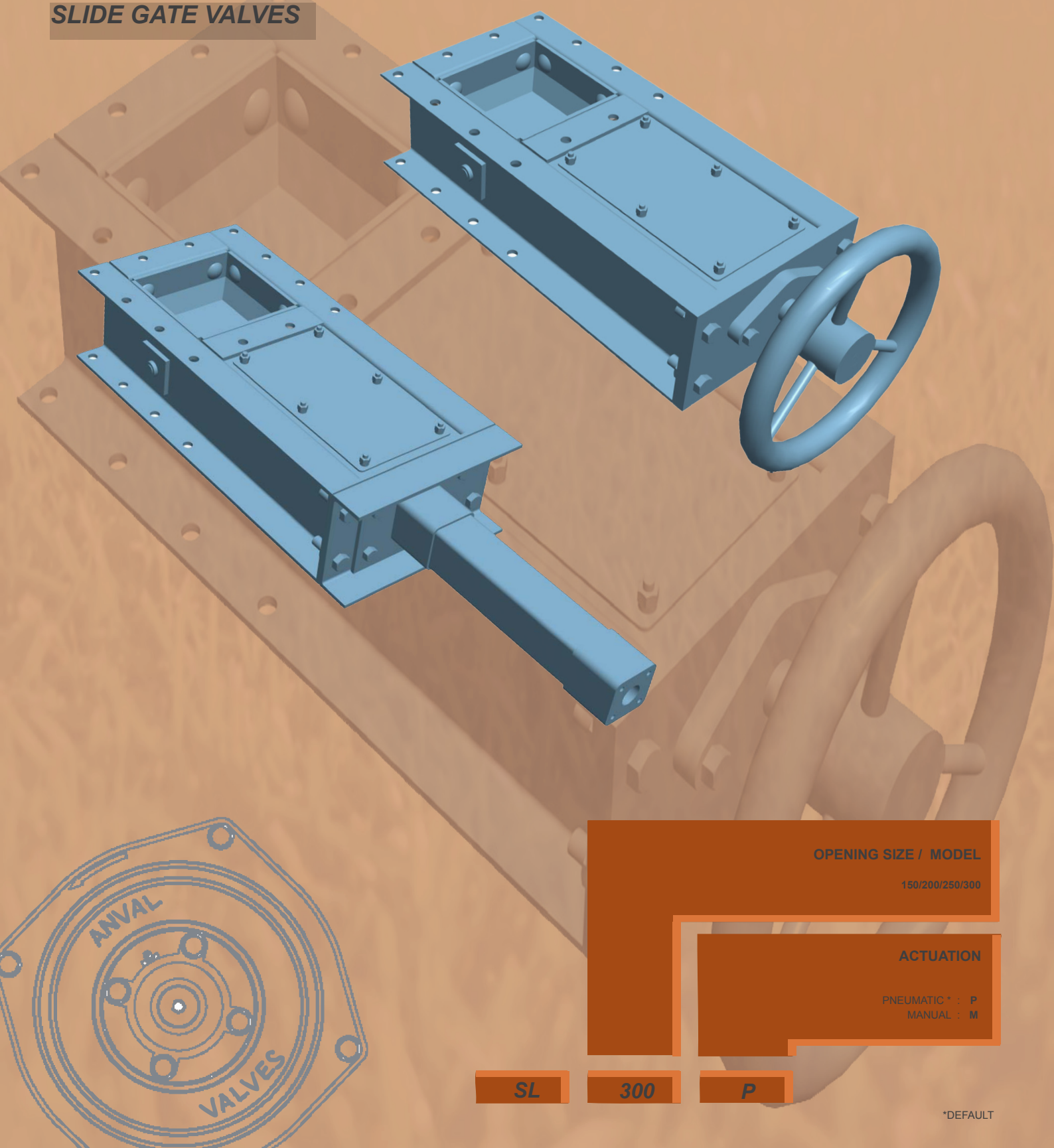


# SL SERIES

## SLIDE GATE VALVES



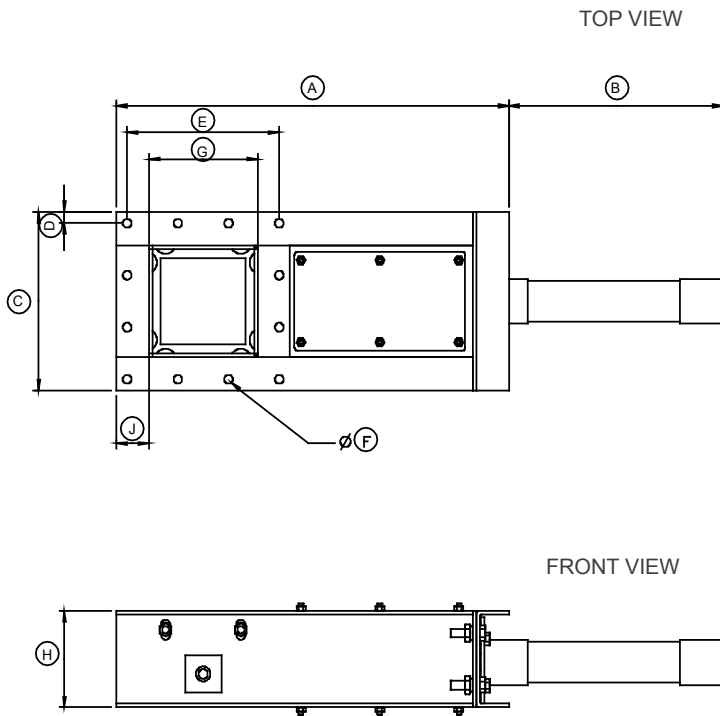
<p><b>OPENING SIZE / MODEL</b></p> <p>150/200/250/300</p>
<p><b>ACTUATION</b></p> <p>PNEUMATIC * : P MANUAL : M</p>

**SL 300 P**

\*DEFAULT

**PNEUMATIC SLIDE GATE DIMENSIONS**

SL

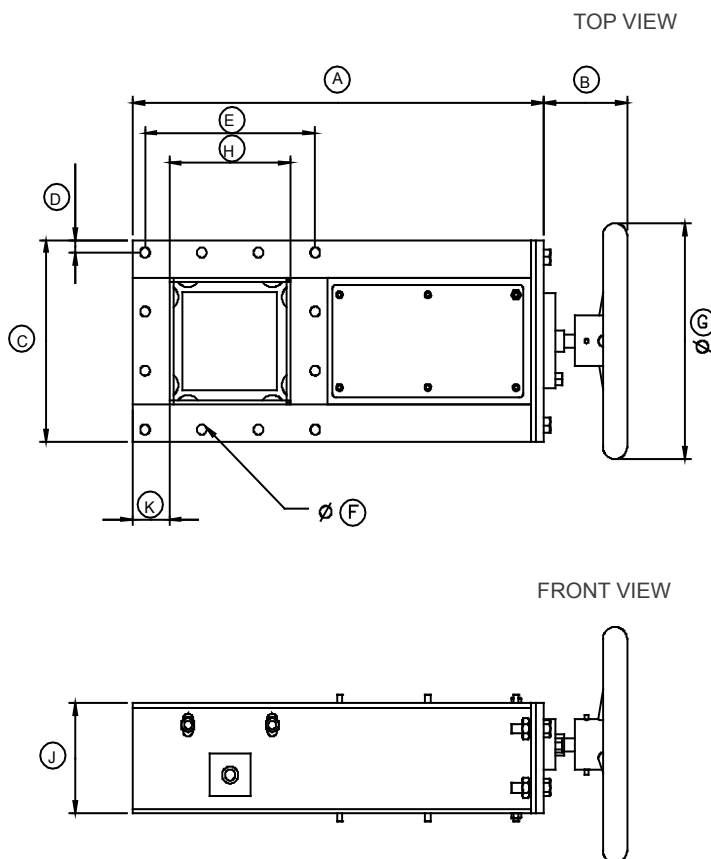


NAME	SL 150	SL 200	SL 250	SL 300
A	542	640	760	880
B	238	288	328	368
C	240	290	360	430
D	15	17.5	22.5	27
E	3 SPACES @70=210	3 SPACES @85=255	3 SPACES @105=315	4 SPACES @94=376
F	Ø 12	Ø 14	Ø 14	Ø 15
G	150	200	250	300
H	130	130	130	130
J	45	45	55	65
NET WEIGHT IN KGS	25	33	44	51
GROSS WEIGHT IN KGS	29	38	50	58

ALL DIMENSIONS IN MM.

**MANUAL SLIDE GATE DIMENSIONS**

SL



NAME	SL 150	SL 200	SL 250	SL 300
A	507	605	715	825
B	101	100	100	101
C	240	290	360	430
D	15	17.5	22.5	27
E	3 SPACES @70=210	3 SPACES @85=255	3 SPACES @105=315	4 SPACES @94=376
F	Ø 12	Ø 14	Ø 14	Ø 15
G	Ø 280	Ø 280	Ø 280	Ø 280
H	150	200	250	300
J	130	130	130	130
K	45	45	55	65
NET WEIGHT IN KGS	22	30	40	48
GROSS WEIGHT IN KGS	26	35	46	55

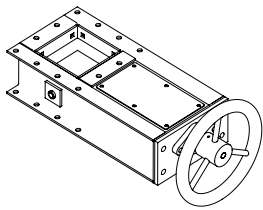
ALL DIMENSIONS IN MM.

## BLADE

STANDARD BLADE MATERIAL	: Mild Steel
BLADE THICKNESS	: 10mm
<b>OPTIONS AVAILABLE</b>	
BLADE MATERIAL	: Stainless Steel

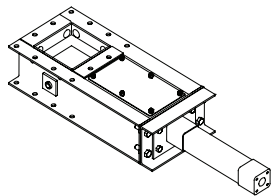
SL

## ACTUATORS



HAND WHEEL

- HAND WHEEL / MANUAL : Spindle and Socket arrangement



PNEUMATIC

- PNEUMATIC : Single cylinder double acting piston

SL

## SL VALVE BODY

STANDARD MATERIAL CONSTRUCTION	: Mild Steel
FLANGE THICKNESS	: 5mm
<b>OPTIONS AVAILABLE</b>	
BODY MATERIAL	: Stainless Steel

SL

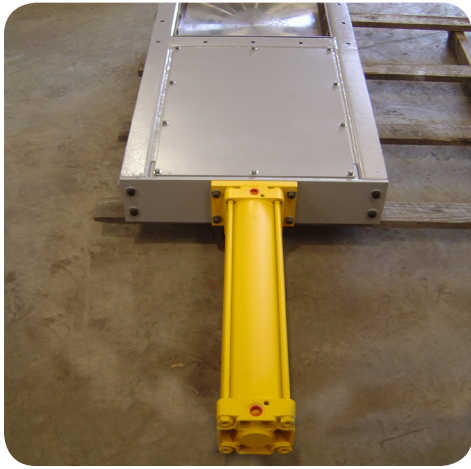
## SIZE RANGE AND APPLICATION

OPENING SIZE RANGE	: 150 mm to 300 mm
--------------------	--------------------

SL

### APPLICATION

- Silos and hoppers for all bulk material isolation applications.



PNEUMATIC

- **ECONOMICAL & RELIABLE SOLUTION FOR BULK MATERIAL ISOLATION.**
- **COMPACT SIMPLE AND ROBUST DESIGN.**
- **FABRICATED CONSTRUCTION AVAILABLE IN MS & SS MATERIALS.**
- **MANUAL, AND PNEUMATIC ACTUATION.**
- **MINIMAL LEAKAGE AND FREE FLOW OF MATERIALS WITHOUT CLOGGING**

- **EASY TO INSTALL AND MAINTAIN. HEAVY DUTY ISOLATION.**
- **DESIGNED AND MANUFACTURED TO MEET INTERNATIONAL STANDARDS**
- **CUSTOM VALVES MANUFACTURED TO SUIT SPECIFIC REQUIREMENTS.**



HAND WHEEL / MANUAL