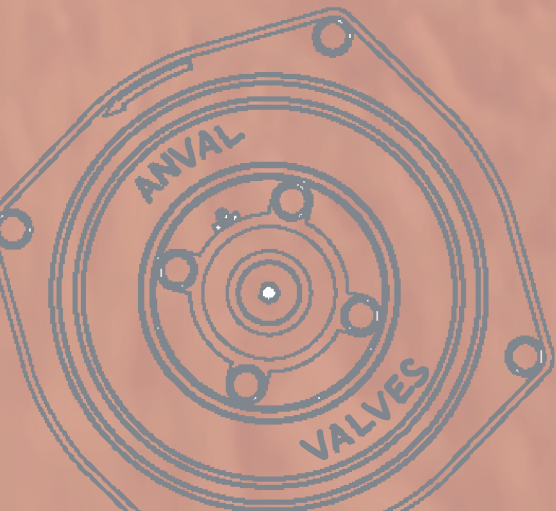
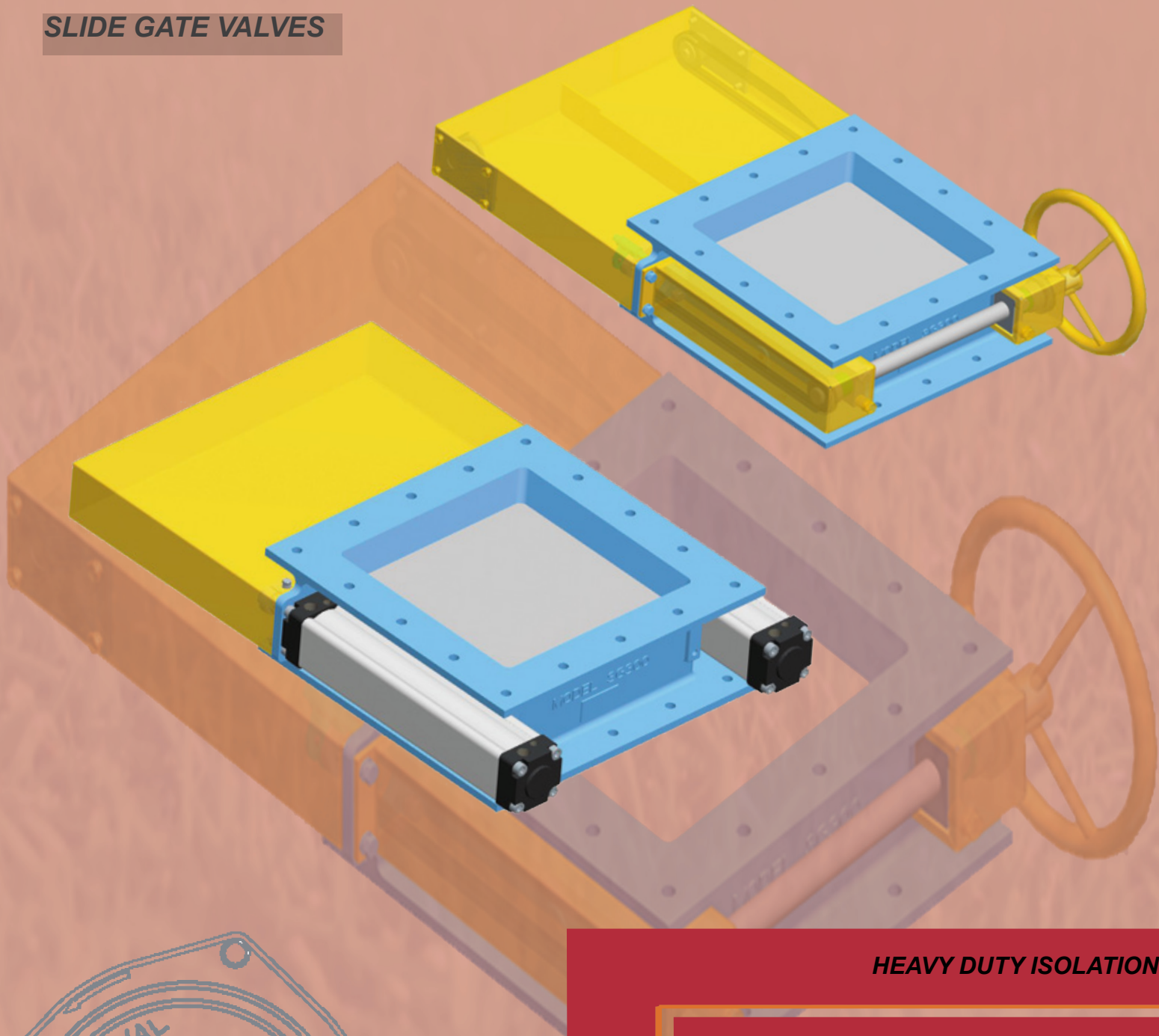


SG SERIES

SLIDE GATE VALVES



HEAVY DUTY ISOLATION

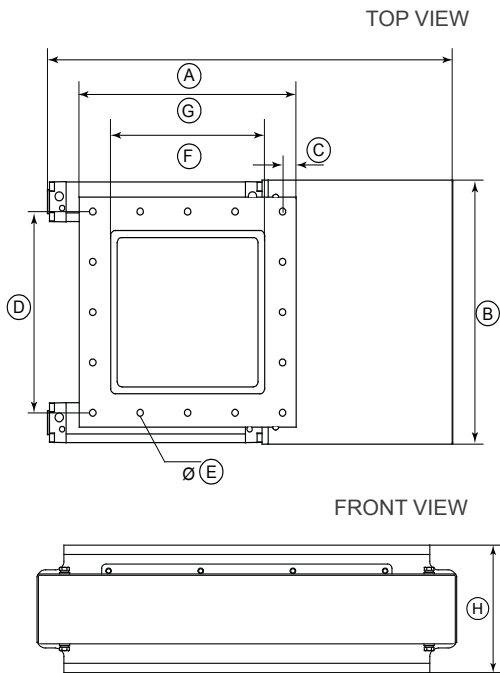
MANUAL / PNEUMATIC / MOTORIZED

DEAL WITH PRESSURE DROPS

COMPACT & ROBUST

PNEUMATIC SLIDE GATE DIMENSIONS

SG

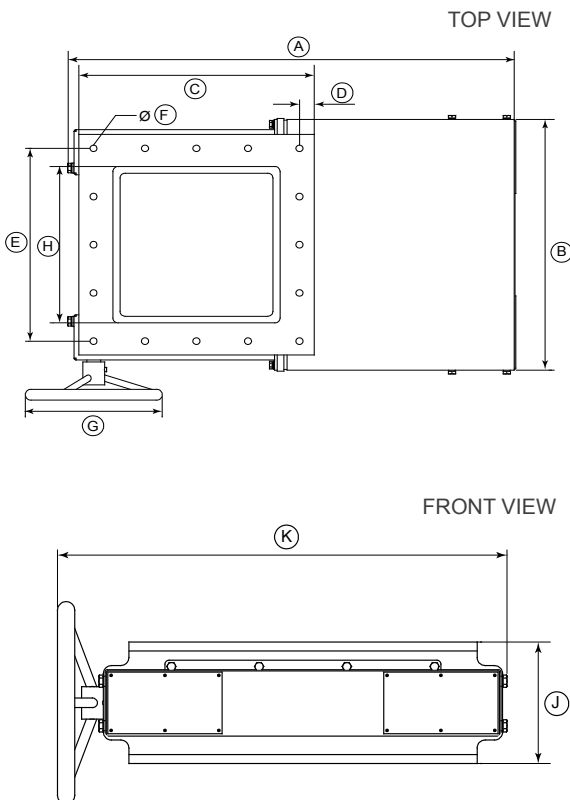


NAME	SG 300	SG 350	SG 400	SG 450	SG 750
A	803	907	1021	1155	1781
B	493	586	636	938	1420
C	27	28	30	30	50
D	4 SPACES @94 = 376	4 SPACES @106 = 424	5 SPACES @ 94 = 470	5 SPACES @114 = 570	6 SPACES @150 = 900
E	Ø 13	Ø 13	Ø 13	Ø 15	Ø 22
F	□305	□355	□400	□450	□750
G	□430	□480	□530	□630	□1000
H	150	160	136	190	250
NET WEIGHT IN KGS	52.5	75	87	153	431
GROSS WEIGHT IN KGS	58	84	96	165	458

ALL DIMENSIONS IN MM.

MANUAL SLIDE GATE DIMENSIONS

SG



NAME	SG 300	SG 350	SG 400	SG 450	SG 750
A	818	935	1026	1169	1797
B	489	581	631	715	1120
C	□430	□480	□530	□630	□1000
D	27	28	30	30	50
E	4 SPACES @94 = 376	4 SPACES @106 = 424	5 SPACES @94 = 470	5 SPACES @114 = 570	6 SPACES @150 = 900
F	Ø13	Ø13	Ø13	Ø15	Ø22
G	Ø250	Ø250	Ø250	Ø250	Ø400
H	□305	□355	□400	□450	□750
J	150	160	160	190	250
K	555	642	692	800	1250
NET WEIGHT IN KGS	57	77	87	140	402
GROSS WEIGHT IN KGS	65	85	98	153	425

ALL DIMENSIONS IN MM.

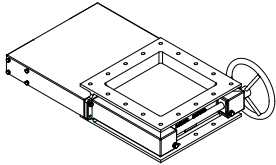
BLADE

STANDARD BLADE MATERIAL : Cast Iron

SG

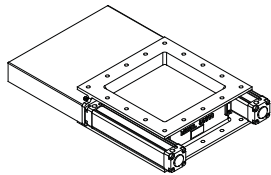
ACTUATORS

SG



HAND WHEEL

- HAND WHEEL / MANUAL : Chain and Clamp Arrangement



PNEUMATIC

- PNEUMATIC : Double cylinder double acting piston

SG VALVE BODY

SG

STANDARD MATERIAL CONSTRUCTION : Cast Iron

SEALING : Rubber Sealing (temperature < 200 ° C)
Fiber glass Seal (temperature > 200 ° C)

OPTIONS AVAILABLE

BODY MATERIAL : Cast Iron

SIZE RANGE AND APPLICATION

SG

OPENING SIZE RANGE : 300 mm to 750 mm

APPLICATION

- Silos and hoppers for all bulk material applications.



- HEAVY DUTY ISOLATION.
- CAST IRON MATERIAL CONSTRUCTION.
- MANUAL, PNEUMATIC AND MOTORISED ACTUATION.
- COMPACT AND ROBUST DESIGN.
- CAN HANDLE HIGHER TEMPERATURE

PNEUMATIC

- DEAL WITH PRESSURE DROPS
- “ANVAL TRIGGER LOCK TECHNOLOGY” FOR BETTER SEALING
- EASY TO MAINTAIN.



HAND WHEEL / MANUAL